

MAGNITUDE OF THE CORRECTIONAL MINISTRY IN ARIZONA

“The Church provides support to adults and youth who are incarcerated.”

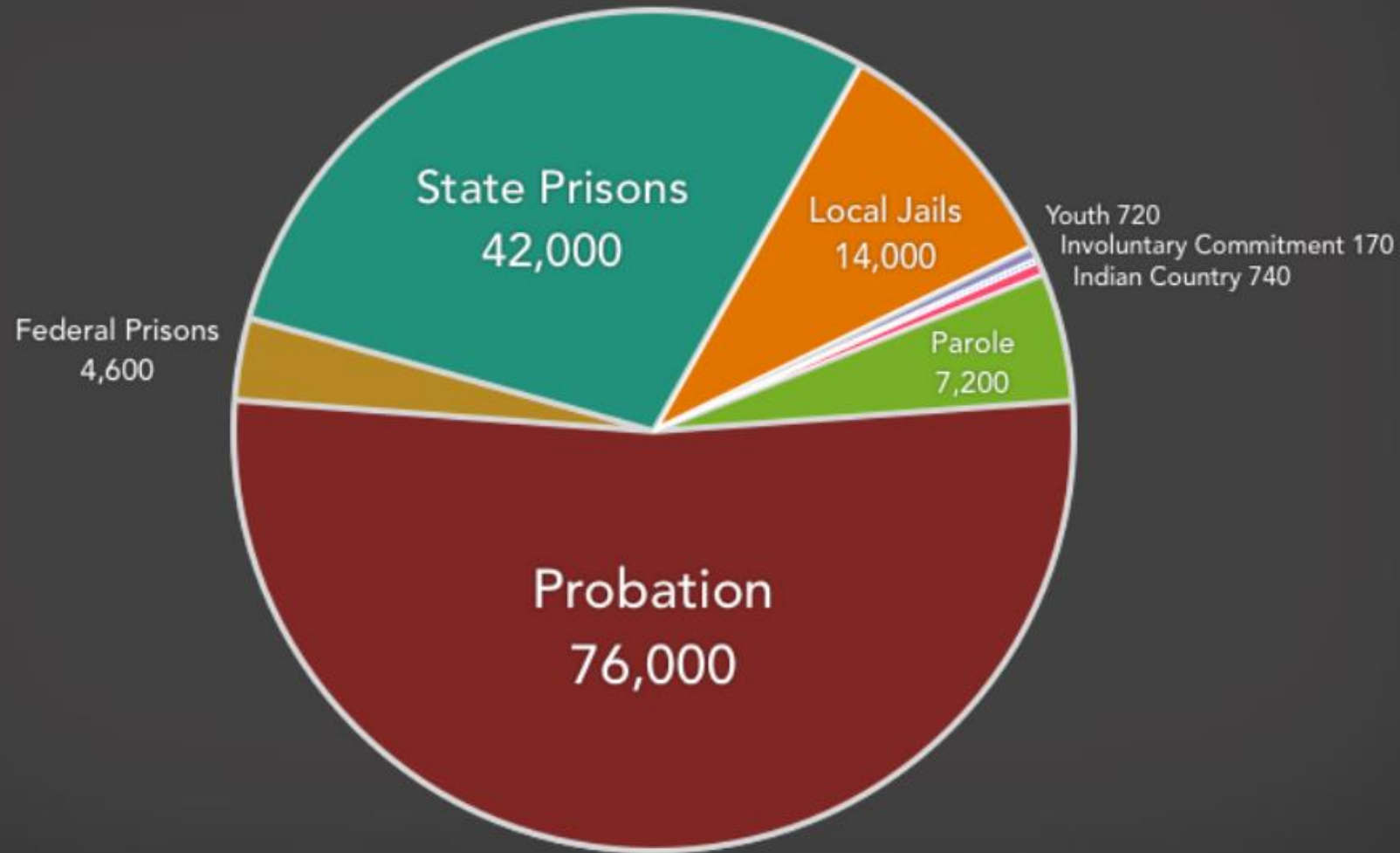
Providing Support for Those in Correctional Facilities

<https://www.churchofjesuschrist.org/callings/melchizedek-priesthood/my-calling/-providing-support-for-those-in-correctional-facilities?lang=eng>



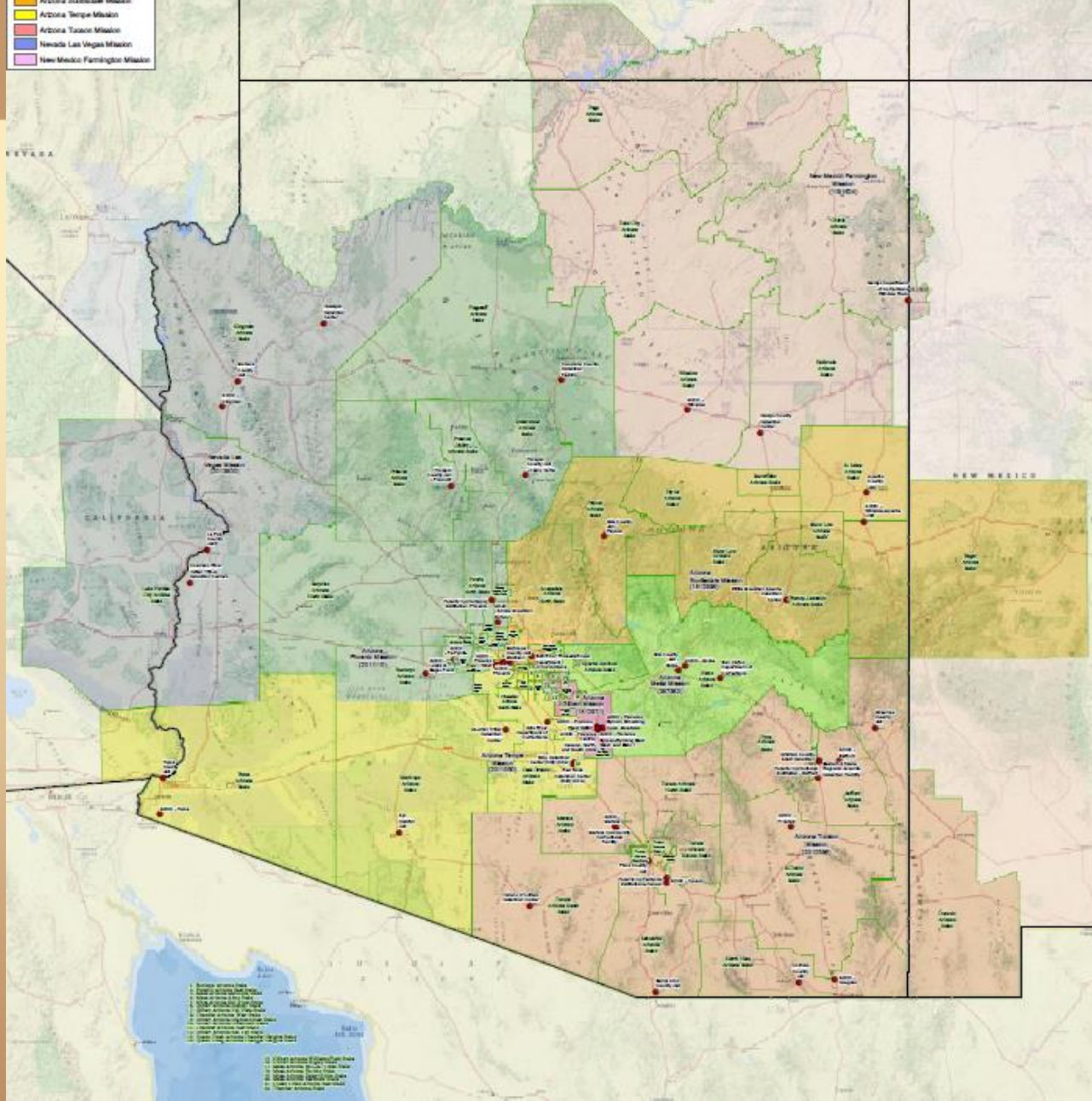
How many people are in Arizona's criminal justice system?

145,000 Arizona residents are behind bars or under criminal justice supervision.



Correctional Facilities in Arizona

- Legend**
- AZ Correctional Facility
 - State
 - State
 - Arizona Gilbert Mission
 - Arizona Mesa Mission
 - Arizona Phoenix Mission
 - Arizona Scottsdale Mission
 - Arizona Tempe Mission
 - Arizona Tucson Mission
 - Nevada Las Vegas Mission
 - New Mexico Farmington Mission

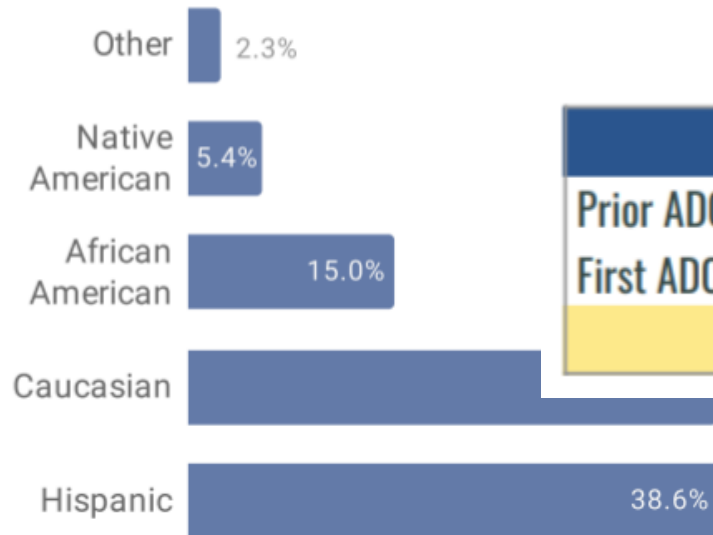


~73,000 Total Inmates in Arizona

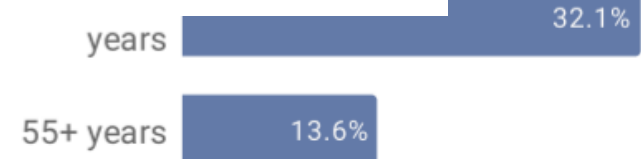
- 18 State Prisons: 36,254 (32,814 male, 3,440 female)
- 4 Federal Prisons: ~3,400
- 3 Private Prisons: ~14,000
- 15 County Jails: ~14,000
- 6 Detention Facilities (i.e., ICE): ~3,000
- 16 Juvenile Centers: ~2,000
- **Total estimated LDS: 3,650 to 5,100 (5-7%)**

Arizona Department of Corrections, Rehabilitation, and Reentry—Sept 2021

Racial & Ethnic Distribution



Inmate Age Distribution



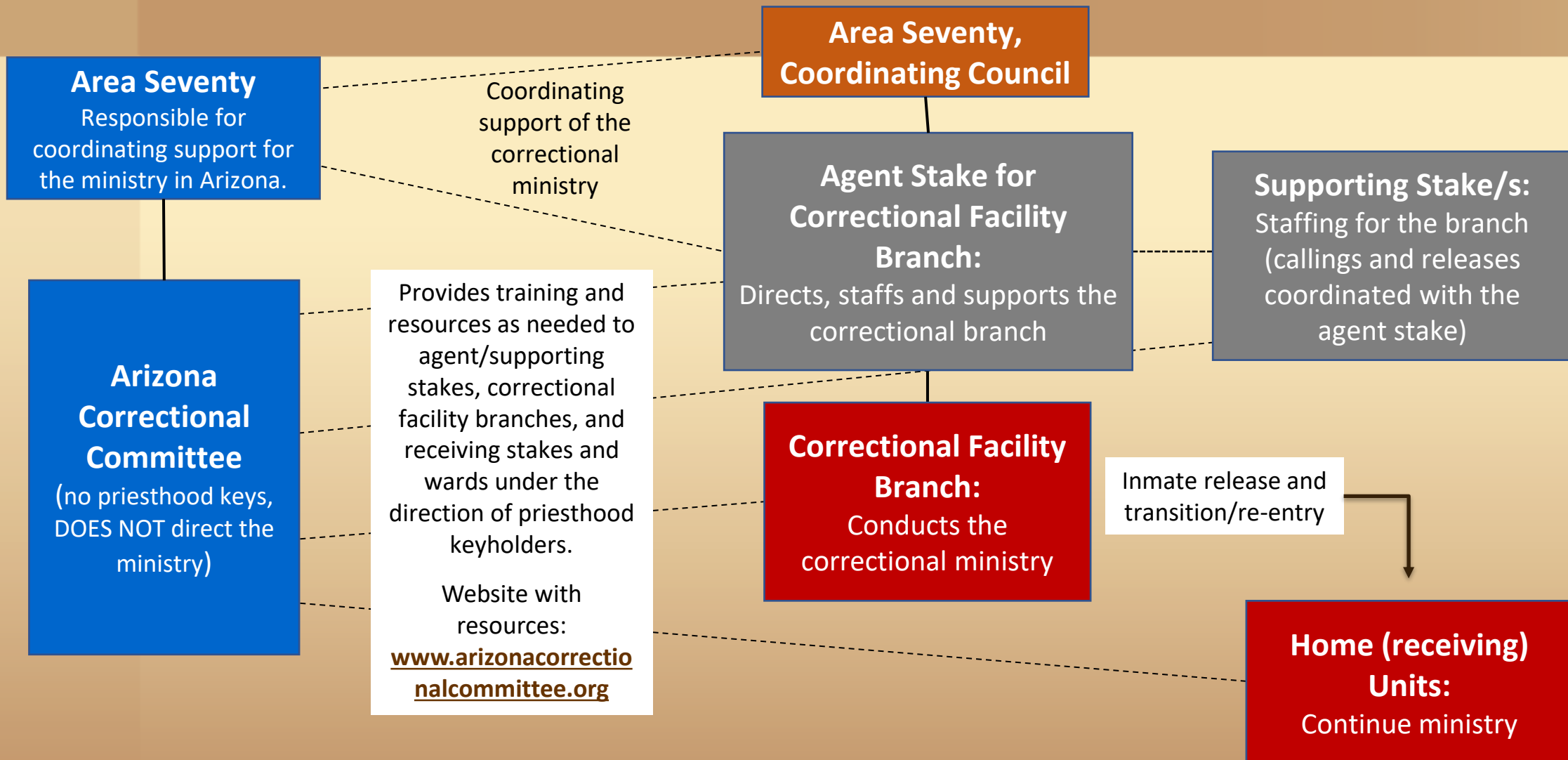
INMATE HISTORY WITH ADCRR

| | US Citizens | Crim. Aliens | TOTAL | % |
|-------------------------|---------------|--------------|---------------|---------------|
| Prior ADCRR Prison Term | 17,582 | 398 | 17,980 | 50.8% |
| First ADCRR Prison Term | 15,307 | 2,123 | 17,430 | 49.2% |
| TOTAL | 32,889 | 2,521 | 35,410 | 100.0% |

Branches, Workers and Attendance

- 20 Correctional Branches sponsored by 20 agent stakes with 31 additional stakes supporting
- 4 ministries (not branches)
- ~700 workers/letter writers
- Attendance previous to COVID-19: approximately 1,500 to 3,000/week, of which up to 60% are non-members
- Based on information from 10 branches:
 - Current attendance: about 50% of pre-COVID-19
 - 46 individuals have been/will be released in 2021

Agent Stake, Correctional Facility Branch and Supporting Stake Organization



Training and Resources for Your Correctional Ministry

Provided by the Arizona Correctional Committee of The Church of Jesus Christ of Latter-day Saints.
This is not an official website of The Church of Jesus Christ of Latter-day Saints.

What's New:



Training Presentation for Stake Presidents, High Councilors and Branch Presidencies

- Ministry
- Committee
- Branches
- Training
- Transition/Re-entry
- Official Search Links
- Refer an Inmate
- Contact

What is the Arizona Correctional Committee (ACC)?

“Direction and training for agent stake presidencies and for correctional facility branch presidencies is provided by an assigned Area Seventy, as needed, and by others who may be called to assist.”¹

- The ACC is comprised of individuals who are the “others...called to assist.”¹
- The committee strives to respect and not interfere with the mantle carried by priesthood keyholder(s).
- Acts as a liaison with institutions/agencies in the state.

¹Providing Support for Those in Correctional Facilities:

<https://www.churchofjesuschrist.org/callings/melchizedek-priesthood/my-calling/-providing-support-for-those-in-correctional-facilities?lang=eng>